

# ANTENNA CATALOGUE

Model AD 6210



Features	
Inlay	73×21mm
Antenna	71×19mm
Frequency	860-960MHz
Read range	≥6M
Protocol	ISO18000-6C/EPC Class1 Gen2
Chips	Alien Higgs3/Higgs4

Model AD 6218



Features	
Inlay	24.5×24.5mm
Antenna	22.5×22.5mm
Frequency	860-960MHz
Read range	≥3.5M
Protocol	ISO18000-6C/EPC Class1 Gen2
Chips	Alien Higgs3

Model AD 6219



Features	
Inlay	95×21mm
Antenna	93×19mm
Frequency	860-960MHz
Read range	≥6M
Protocol	ISO18000-6C/EPC Class1 Gen2
Chips	Alien Higgs3

Model AD 6253



Features	
Inlay	96.8mm x 10.1mm
Antenna	94.8mm x 8.1mm
Frequency	860-960MHz
Read range	≥6M
Protocol	ISO18000-6C/EPC Class1 Gen2
Chips	Alien Higgs3/Higgs4

Model AD 6254



Features	
Inlay	72mm x 11.5mm
Antenna	70mm x 9.5mm
Frequency	860-960MHz
Read range	≥4M
Protocol	ISO18000-6C/EPC Class1 Gen2
Chips	AlienHiggs3/Higgs4

Model AD 6263



Features	
Inlay	14mm x 11mm
Antenna	12mm x 9mm
Frequency	860-960MHz
Read range	≥0.2M
Protocol	ISO18000-6C/EPC Class1 Gen2
Chips	AlienHiggs3/Higgs4

Model AD 6265



Features	
Inlay	96mm x5mm
Antenna	94mm x3mm
Frequency	860-960MHz
Read range	≥3M
Protocol	ISO18000-6C/EPC Class1 Gen2
Chips	Alien Higgs3 /Higgs4

Model AD 6225



Features	
Inlay	97mm x10mm
Antenna	95mm x8mm
Frequency	860-960MHz
Read range	≥6M
Protocol	ISO18000-6C/EPC Class1 Gen2
Chips	Impinj Monza 4QT / 4E / 4D

Model AD 6220



Features	
Omni-directional antenna	
Inlay	46×46mm
Antenna	44×44mm
Frequency	860-960MHz
Read range	≥6M
Protocol	ISO18000-6C/EPC Class1 Gen2
Chips	Impinj Monza 4QT / 4E / 4D

Model AD 6229



Features	
Inlay	70mm x20.6mm
Antenna	68mm x18.6mm
Frequency	860-960MHz
Read range	≥4M
Protocol	ISO18000-6C/EPC Class1 Gen2
Chips	Impinj Monza 4QT / 4E / 4D

Model AD 6239



Features	
Inlay	24mm x10mm
Antenna	22mm x8mm
Frequency	860-960MHz
Read range	≥0.3M
Protocol	ISO18000-6C/EPC Class1 Gen2
Chips	Impinj Monza 4QT / 4E / 4D

Model AD 6270



Features	
Inlay	42mm x 17mm
Antenna	40mm x 15mm
Frequency	860-960MHz
Read range	≥3M
Protocol	ISO18000-6C/EPC Class1 Gen2
Chips	Impinj Monza R6

### Model AD 6271



Features	
Inlay	97mm x 10mm
Antenna	95mm x 8mm
Frequency	860~960MHz
Read range	≥6M
Protocol	ISO18000-6C/EPC Class1 Gen2
Chips	Impinj Monza R6

### Model AD 6272



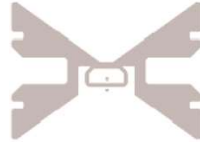
Features	
Inlay	107mm x 8mm
Antenna	105mm x 6mm
Frequency	860~960MHz
Read range	≥6M
Protocol	ISO18000-6C/EPC Class1 Gen2
Chips	Impinj Monza R6

### Model AD 6273



Features	
Inlay	52mm x 32mm
Antenna	50mm x 30mm
Frequency	860~960MHz
Read range	≥5M
Protocol	ISO18000-6C/EPC Class1 Gen2
Chips	Impinj Monza R6

### Model AD 6275



Features	
Inlay	72mm x 52mm
Antenna	70mm x 50mm
Frequency	860~960MHz
Read range	≥6M
Protocol	ISO18000-6C/EPC Class1 Gen2
Chips	Impinj Monza R6

### Model AD 6277



Features	
Inlay	φ12mm
Antenna	φ10mm
Frequency	860~960MHz
Read range	≥0.3M
Protocol	ISO18000-6C/EPC Class1 Gen2
Chips	Impinj Monza R6

### Model AD 6280



Features	
Inlay	70mm x 16mm
Antenna	68mm x 14mm
Frequency	860~960MHz
Read range	≥6M
Protocol	ISO18000-6C/EPC Class1 Gen2
Chips	Impinj Monza 5

### Model AD 6281



Features	
Inlay	97mm x 10mm
Antenna	95mm x 8mm
Frequency	860-960MHz
Read range	≥6M
Protocol	ISO18000-6C/EPC Class1 Gen2
Chips	Impinj Monza 5

### Model AD 6282



Features	
Inlay	46mm x 20mm
Antenna	44mm x 18mm
Frequency	860-960MHz
Read range	≥3M
Protocol	ISO18000-6C/EPC Class1 Gen2
Chips	Impinj Monza 5

### Model AD 6283



Features	
Inlay	99mm x 5mm
Antenna	97mm x 3mm
Frequency	860-960MHz
Read range	≥6M
Protocol	ISO18000-6C/EPC Class1 Gen2
Chips	Impinj Monza 5

### Model AD 6284



Features	
Inlay	24.5mm x 24.5mm
Antenna	22.5mm x 22.5mm
Frequency	860-960MHz
Read range	≥0.6M
Protocol	ISO18000-6C/EPC Class1 Gen2
Chips	Impinj Monza 5

### Model AD 4015



Features	
Inlay	42mm x 17mm
Antenna	40mm x 15mm
Frequency	860-960MHz
Read range	≥4M
Protocol	ISO18000-6C/EPC Class1 Gen2
Chips	Alien Higgs4

### Model AD 4321



Features	
Inlay	45mm x 23mm
Antenna	43mm x 21mm
Frequency	860-960MHz
Read range	≥5M
Protocol	ISO18000-6C/EPC Class1 Gen2
Chips	NXP Ucode G2M

### Model AD 3202



Features	
Inlay	Φ29mm
Antenna	Φ27.6mm
Frequency	13.5-14.5MHz
Read range	≥4cm
Protocol	ISO 14443 A
Chips	NXP Mifare Series: Ultralight/S50/S70; Fudan 08

### Model AD 3206



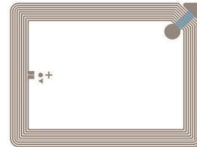
Features	
Inlay	77×45mm
Antenna	75×43mm
Frequency	13.5-14.5MHz
Read range	≥5cm
Protocol	ISO 14443 A
Chips	NXP Mifare Series: Ultralight/S50/S70; Fudan 08

### Model AD 3208



Features	
Inlay	77×23mm
Antenna	75×21mm
Frequency	13.5-14.5MHz
Read range	≥3cm
Protocol	ISO 14443 A
Chips	NXP Mifare Series: Ultralight/S50/S70; Fudan 08

### Model AD 3210



Features	
Inlay	46×36mm
Antenna	44×34mm
Frequency	13.5-14.5MHz
Read range	≥4cm
Protocol	ISO 14443 A
Chips	NXP Mifare Series: Ultralight/S50/S70; Fudan 08

### Model AD 3212



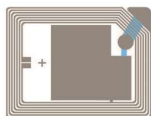
Features	
Inlay	46×23mm
Antenna	44×21mm
Frequency	13.5-14.5MHz
Read range	≥4cm
Protocol	ISO 14443 A
Chips	NXP Mifare Series: Ultralight/S50/S70; Fudan 08

### Model AD 3216



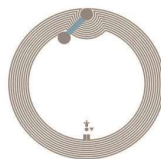
Features	
Inlay	37×21mm
Antenna	34.5 ×18.5mm
Frequency	13.5-14.5MHz
Read range	≥3cm
Protocol	ISO 14443 A
Chips	NXP Mifare Series: Ultralight/S50/S70; Fudan 08

### Model AD 3218



Features	
Inlay	25×20mm
Antenna	23×18mm
Frequency	13.5-14.5MHz
Read range	≥2cm
Protocol	ISO 14443 A
Chips	NXP Mifare Series: Ultralight/S50/S70; Fudan 08

### Model AD 3220



Features	
Inlay	Φ46mm
Antenna	Φ44mm
Frequency	13.5-14.5MHz
Read range	≥5cm
Protocol	ISO 14443 A
Chips	NXP Mifare Series: Ultralight/S50/S70; Fudan 08

### Model AD 3222



Features	
Inlay	Φ37mm
Antenna	Φ35mm
Frequency	13.5-14.5MHz
Read range	≥4cm
Protocol	ISO 14443A
Chips	NXP Mifare Series: Ultralight/S50/S70; Fudan 08

### Model AD 3226



Features	
Inlay	Φ22mm
Antenna	Φ20mm
Frequency	13.5-14.5MHz
Read range	2-3cm
Protocol	ISO 14443A
Chips	NXP Mifare Series: Ultralight/S50/S70; Fudan 08

### Model AD 3228



Features	
Inlay	77×45mm
Antenna	75×43mm
Frequency	13.5-14.5MHz
Read range	≥5cm
Protocol	ISO 14443 A
Chips	NXP NTAG Series: N203/N213/N215/N216, etc.

### Model AD 3230



Features	
Inlay	Φ46mm
Antenna	Φ44mm
Frequency	13.5-14.5MHz
Read range	≥5cm
Protocol	ISO 14443 A
Chips	NXP NTAG Series: N203/N213/N215/N216, etc.

### Model AD 3232



#### Features

Inlay	Φ27mm
Antenna	Φ25mm
Frequency	14.0-14.4MHz
Read range	≥2cm
Protocol	ISO 14443 A
Chips	NXP NTAG Series: N203/N213/N215/N216, etc.

### Model AD 3236



#### Features

Inlay	Φ26mm
Antenna	Φ24mm
Frequency	13.5-14.5MHz
Read range	≥2cm
Protocol	ISO 14443 A
Chips	NXP NTAG Series: N203/N213/N215/N216, etc.

### Model AD 3238



#### Features

Inlay	Φ24mm
Antenna	Φ22mm
Frequency	13.5-14.5MHz
Read range	≥2cm
Protocol	ISO 14443 A
Chips	NXP NTAG Series: N203/N213/N215/N216, etc.

### Model AD 3250



#### Features

Inlay	Φ27mm
Antenna	Φ25mm
Frequency	13.8—14.2MHz
Read range	2 - 3cm
Protocol	ISO 14443 A
Chips	NXP Mifare Series: Ultralight/S50/S70; Fudan08

### Model AD 3252



#### Features

Inlay	15.5×15.5mm
Antenna	14.5×14.5mm
Frequency	13.8-14.2MHz
Read range	2-3cm
Protocol	ISO 14443 A
Chips	NXP Mifare Series: Ultralight/S50/S70; Fudan 08

### Model AD 3256



#### Features

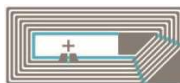
Inlay	Φ39mm
Antenna	Φ37mm
Frequency	13.8-14.2MHz
Read range	3 - 5cm
Protocol	ISO 14443 A
Chips	NXP NTAG Series: N203/N213/N215/N216, etc.

Model AD 3258



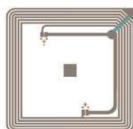
Features	
Inlay	Φ17.8mm
Antenna	Φ15.8mm
Frequency	13.8-14.2MHz
Read range	2-3cm
Protocol	ISO 14443 A
Chips	NXP Mifare Series: Ultralight/S50/S70; Fudan 08

Model AD 3260



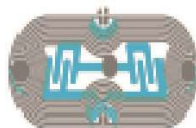
Features	
Inlay	10×20mm
Antenna	8×18mm
Frequency	13.8-14.2MHz
Read range	1-2cm
Protocol	ISO 14443 A
Chips	NXP NTAG Series: N203/N213/N215/N216, etc.

Model AD 3262



Features	
Inlay	42×42mm
Antenna	40×40mm
Frequency	13.8-14.2MHz
Read range	6-8cm
Protocol	ISO 14443 A
Chips	NXP NTAG Series: N203/N213/N215/N216, etc.

Model AD 3261



Features	
Inlay	37mm x 16mm
Antenna	35mm x 14mm
Frequency	13.7-13.9MHz
Read range	≥3cm
Protocol	ISO 14443 A
Chips	NXP NTAG Series: N203/N213/N215/N216, etc.

Model AD 3235



Features	
Inlay	37mm x 24.5mm
Antenna	35mm x 22.5mm
Frequency	13.4-13.5MHz
Read range	≥4cm
Protocol	ISO15693
Chips	NXP Icode Series: /SLI /SLIX /ILT, etc.

Model AD 3257



Features	
Inlay	Φ42mm
Antenna	Φ40mm
Frequency	13.7-13.9MHz
Read range	≥5cm
Protocol	ISO 14443 A
Chips	NXP Mifare Series: Ultralight/S50/S70; Fudan 08



### Model AD 3106



Features	
Inlay	21×21mm
Antenna	19.5×19.5mm
Frequency	13.5-14.5MHz
Read range	≥3cm
Protocol	ISO 15693
Chips	NXP Icode Series: /SLI /SLIX /ILT, etc.

### Model AD 3108



Features	
Inlay	φ27mm
Antenna	φ25mm
Frequency	14-14.4MHz
Read range	≥2cm
Protocol	ISO 15693
Chips	NXP Icode Series: /SLI /SLIX /ILT, etc.

### Model AD 3110



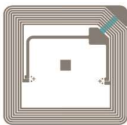
Features	
Inlay	42×27mm
Antenna	40×25mm
Frequency	13.8-14.2MHz
Read range	6-8cm
Protocol	ISO 15693
Chips	NXP Icode Series: /SLI /SLIX /ILT, etc.

### Model AD 3112



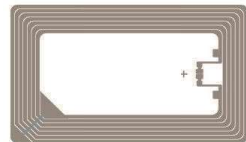
Features	
Inlay	φ24mm
Antenna	φ22mm
Frequency	13.8-14.2MHz
Read range	5-7cm
Protocol	ISO 15693
Chips	NXP Icode Series: /SLI /SLIX /ILT, etc.

### Model AD 3116



Features	
Inlay	47×47mm
Antenna	45×45mm
Frequency	13.8-14.2MHz
Read range	6-8cm
Protocol	ISO 15693
Chips	NXP Icode Series: /SLI /SLIX /ILT, etc.

### Model AD 3102



Features	
Inlay	78×47mm
Antenna	76×45mm
Frequency	13.5-14.5MHz
Read range	≥5cm
Protocol	ISO 15693
Chips	NXP Icode Series: /SLI /SLIX /ILT, etc.

### Model AD 3125



Features	
Inlay	28mm x 15mm
Antenna	26mm x 11mm
Frequency	13.7-13.9MHz
Read range	≥3cm
Protocol	ISO15693
Chips	NXP Icode Series: /SLI /SLIX /ILT, etc.

### Model AD 3114



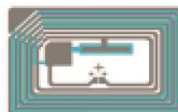
Features	
Inlay	16mm x 16mm
Antenna	14mm x 14mm
Frequency	13.7-13.9MHz
Read range	≥2cm
Protocol	ISO15693
Chips	NXP Icode Series: /SLI /SLIX /ILT, etc.

### Model AD 3111



Features	
Inlay	13.5mm x 13.5mm
Antenna	11.5mm x 11.5mm
Frequency	13.8-14.0MHz
Read range	≥2cm
Protocol	ISO15693
Chips	NXP Icode Series: /SLI /SLIX /ILT, etc.

### Model AD 3115



Features	
Inlay	25mm x 18mm
Antenna	23mm x 16mm
Frequency	14.2—14.4MHz
Read range	≥2cm
Protocol	ISO15693
Chips	NXP Icode Series: /SLI /SLIX /ILT, etc.

### Model AD 3117



Features	
Inlay	38mm x 10mm
Antenna	36mm x 8mm
Frequency	13.9-14.1MHz
Read range	≥3cm
Protocol	ISO15693
Chips	NXP Icode Series: /SLI /SLIX /ILT, etc.

### Model AD 3113



Features	
Inlay	Φ15mm
Antenna	Φ13mm
Frequency	16.9-17.1MHz
Read range	≥2cm
Protocol	ISO15693
Chips	NXP Icode Series: /SLI /SLIX /ILT, etc.